



Benefit of continuous/immediate ART on disease risk: SMART & START combined analysis

AH Borges¹, J Neuhaus², S Sharma², J Neaton², K Henry³, O Anagnostou⁴, T Staub⁵, S Emery⁶ and JD Lundgren¹ for the INSIGHT SMART & START Study Groups

¹CHIP, Dep Infectious Diseases, Rigshospitalet, University of Copenhagen, Copenhagen, Denmark; ²Division of Biostatistics, School of Public Health, University of Minnesota, Minneapolis, Minnesota, USA;

³Hennepin County Medical Center, Minneapolis, Minnesota, USA; ⁴University of Athens, Greece; ⁵Centre Hospitalier de Luxembourg, Service des Maladies Infectieuses, Luxembourg; ⁶Kirby Institute, Sydney, Australia

INTRODUCTION

- The Strategies for Management of Antiretroviral Therapy (SMART)¹ and Strategic Timing of AntiRetroviral Treatment (START)² studies were the seminal trials to establish continuous/immediate antiretroviral therapy (ART) as the standard of care for HIV+ persons.
- Each trial was halted prematurely before the pre-calculated number of endpoints was reached.

HYPOTHESIS

- Treatment differences (hazard ratios) are similar in each study and the pooled analysis will better quantify immediate/continuous ART use in reducing risk of individual clinical outcomes:
- AIDS or AIDS death
- Serious non-AIDS (SNA) including cardiovascular disease (CVD), non-AIDS cancer, end stage renal disease, decompensated liver disease and non-AIDS death
- CVD including myocardial infarction, stroke, coronary revascularization and CVD death
- AIDS and non-AIDS cancer
- All-cause death

METHODS

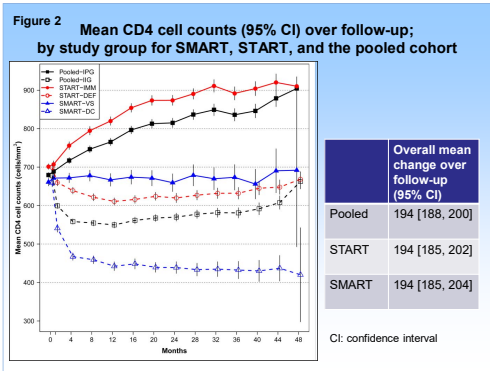
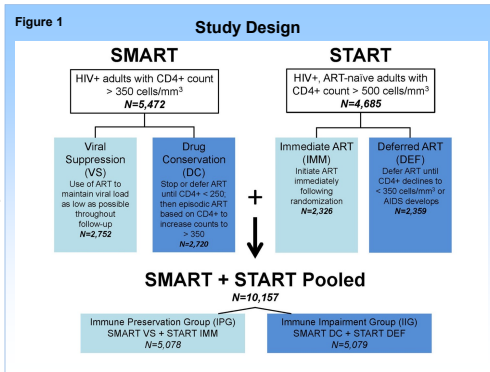
- SMART¹:** Randomised controlled trial (RCT) of 5,472 HIV+ persons with CD4+ > 350 cells/mm³ at baseline that compared continuous use of ART (Viral Suppression arm) with structured treatment interruptions guided by CD4+ cell count (Drug Conservation arm) (Table 1, Figure 1).
- START²:** RCT of 4,685 HIV+ ART naive persons with CD4+ > 500 cells/mm³ at baseline that compared immediate ART initiation (Immediate ART arm) with deferred initiation until CD4+ cell counts dropped below 350 cells/mm³ or development of AIDS (Deferred ART arm) (Table 1, Figure 1).
- Pooled treatment groups (Figure 1):** SMART and START were combined to create two treatment groups:
 - Immune Impairment group (IIG):** SMART Drug Conservation (DC) + START Deferred ART (DEF) arms
 - Immune Preservation group (IPG):** SMART Viral Suppression (VS) + START Immediate ART (IMM) arms

STATISTICAL ANALYSES

- Definitions of clinical outcomes were harmonised in SMART and START to match those in START
- Hazards ratios (HRs) for IIG vs IPG were obtained from Cox models for each outcome, stratifying by study; heterogeneity across studies assessed with interaction terms.
- Cancers were grouped by infection-related or infection-unrelated causes and IIG vs IPG HRs were estimated for each cancer grouping in a single Cox model stratified by type of cancer (infection-related or infection-unrelated) and study.
- To assess consistency of results, we performed subgroup analyses based on demographics, CVD and cancer risk factors, CD4 count, CD4:CD8 ratio and geographical location.

	SMART	SMART	Overall
No. pts	4685	5472	10157
Median age (IQR)	36	43	40 (33 - 48)
Female (%)	26.8	27.2	27.0
High income region* (%)	46.0	85.6	67.3
Median years since HIV diagnosis (IQR)	1	8	4 (1 - 9)
Median CD4 (IQR)	651	597	634 (539 - 776)
Median nadir CD4 (IQR)	553	250	418 (237 - 558)
Median CD4:CD8 ratio ^b (IQR)	0.66	0.68	0.67 (0.48 - 0.93)
Median HIV RNA (IQR)	12759	80	1568 (50 - 19270)
HIV RNA ≤ 400 copies/mL (%)	7.9	71.7	42.3
On ART at baseline (%)	0.0	84.0	45.2
ART naive (%)	100.0	4.6	48.6
Current smoker (%)	31.9	40.5	36.5
Hepatitis B/C coinfection (%)	6.3	17.0	12.1

* High income region: North America, Europe and Australia; low income region: Latin America, Africa, and Asia
^b CD4:CD8 ratio available for 2839 participants in SMART
 Note: Except for female gender, all baseline characteristics significantly different between the two studies.



RESULTS

- Among 10,157 participants (median age 40y; 27% female; 51% MSM; median baseline CD4+ 634 cells/mm³; 37% smokers) (Table 1), there were 123 AIDS or AIDS-deaths, 244 SNA or non-AIDS deaths, 117 cancers, 103 CVD, 118 deaths, for a total of 359 AIDS, SNA or death events.
- Nadir median CD4+ counts in SMART and START were 250 and 553 cells/mm³, respectively (Table 1).
- During follow-up, the overall mean (95% CI) CD4+ cell count was 194 (188-200) cells/mm³ higher in the IPG group than the IIG group (Figure 2).
- When compared to the IIG arm, the IPG arm reached virologic suppression more quickly and remained so during most of the follow up (Figure 3).
- HRs for outcomes were similar in both trials (p-value for heterogeneity ≥ 0.08 for all events) (Figure 4).
- The HR (95%CI) of IIG/IPG for infection-related cancer was 2.3 (1.3-4.3), p=0.006 compared to 1.6 (1.0-2.6), p=0.06 for infection unrelated cancers. P-value comparing the HRs for infection-related versus infection-unrelated cancer was 0.34.
- Adjustment for time-updated CD4 and HIV RNA attenuated the pooled HRs for SNA and death (not shown).
- IIG was consistently associated with increased risk for AIDS and SNA endpoints across all subgroups investigated (interaction p>0.1) (Figure 5), except that the risk of cancer associated with IIG was higher among those ≤ 35 years (p=0.05).

CONCLUSIONS

- A strategy of immune preservation, consisting of immediate and continuous ART use, reduces the risk of AIDS and non-AIDS-defining events during HIV infection.
- Disease risk relative reductions for immune preservation are consistent despite a difference in nadir CD4+ counts of 300 cells/μL
- Risk reduction did not vary by type of cancer.
- Pooled treatment differences are similar across the subgroups investigated.

REFERENCES:

- SMART Study Group. NEJM 2006 Nov 30;355(22):2283-96;
- START Study Group. 2015 Aug 27;373(9):795-807

ACKNOWLEDGMENTS:

We would like to thank all participants of the SMART and START studies. This study was funded by NIH [grant numbers: U01AI46957, U01AI068641, U01AI042170 and U01AI46362 (SMART); UM1-AI068641 and UM1-AI120197 (START)] and Danish National Research Foundation (grant DNRF126). AHB is supported by Lundbeckfonden (grant R219-2016-762). START was supported by the National Institute of Allergy and Infectious Diseases (United States), Agence Nationale de Recherches sur le SIDA et les Hépatites Virales (France), National Health and Medical Research Council (Australia), Danish National Research Foundation (Denmark), Bundesministerium für Bildung und Forschung (Germany), European AIDS Treatment Network, Medical Research Council (United Kingdom), National Institute for Health Research, National Health Service (United Kingdom), and the University of Minnesota. Antiretroviral drugs were donated to the central drug repository by AbbVie, Bristol-Myers Squibb, Gilead Sciences, GlaxoSmithKline/ViiV Healthcare, Janssen Scientific Affairs, and Merck.

Figure 3 Percent of participants with HIV RNA ≤ 400 copies/mL over follow-up; by study group for SMART, START, and the pooled cohort

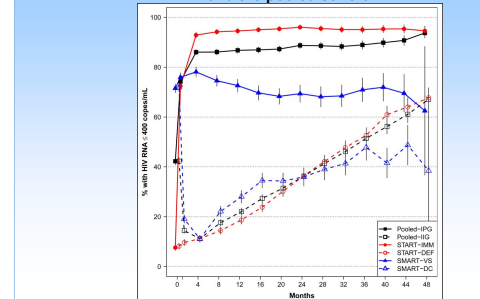


Figure 4 HRs (95% CI) comparing the treatment groups within SMART and START separately and comparing the IIG vs. IPG groups within the pooled cohort

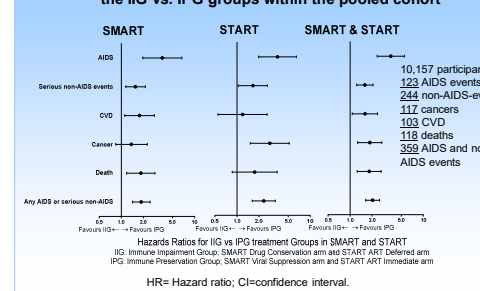


Figure 5 Subgroup analyses for AIDS, SNA or death events; HRs (95% CI) comparing IIG vs. IPG groups within the pooled cohort

